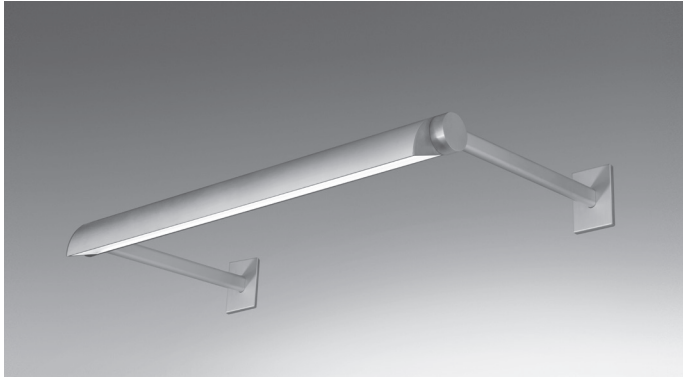
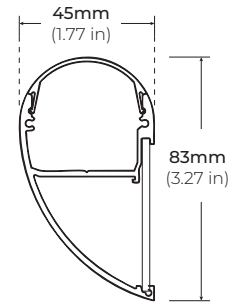


**INSTALLATION GUIDE**



**DIMENSIONS**



**PRE-INSTALLATION**

**Surface Mount**

Power input is 120-277V. Confirm the source voltage is compatible.

Disconnect power source prior to installation.

- Fixture powerfeed is located on the left side of the fixture.
- Junction box is designed to be mounted to the side of the stud.

**SAFETY**

Read all instructions before installation.

These products may present a possible shock, serious injury, or death if improperly installed.

Do not install in wet locations.

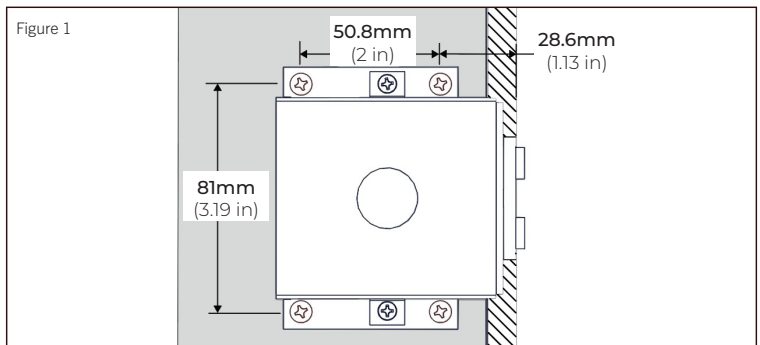
Do not cover fixture with heat insulation gasket or similar materials.

- Product should be installed by a qualified electrician.
- Product should be installed in accordance with these instructions and current electrical codes.
- To reduce the risk of fire or overheating, all connections should be tight and secure.

**INSTALLATION**

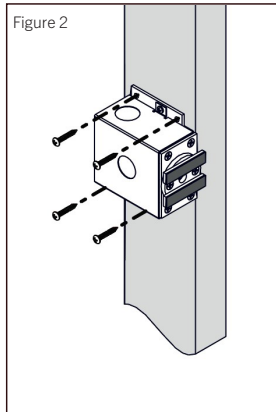
STEP 1

Align the junction box so that it is flush to the drywall. (Figure 1)  
\* Consider the drywall's thickness to ensure the junction box and drywall's alignment after installation.



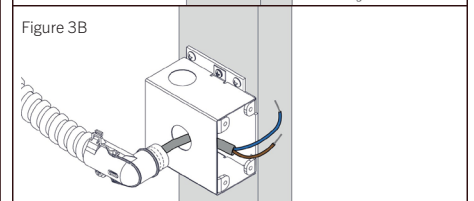
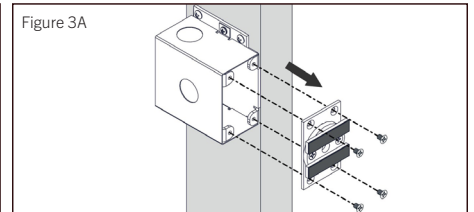
STEP 2

Install the junction box to the power feed location. Ensure the junction box is properly aligned and leveled. (Figure 2)



STEP 3

Loosen the screws to remove the arm holder from the junction box. (Figure 3A)  
Prepare the wiring into the junction box. (Figure 3B)



**INSTALLATION**

STEP 4

Install the remote driver junction box(es) in an accessible/serviceable location. Run low voltage wire from the remote driver junction box to the canopy junction box. (Figure 4)

STEP 5

Screw the mounting plate to the junction box, and cover it by using the cover plate (Figure 5)

*\*The cover plate secures with velcro.*

STEP 6

Screw the fixture's right arm mounting plate directly into the wall (with appropriate backing and support by others). (Figure 6)

*\*If installing a single unit, stop installation here. If installing more than one fixture, continue to step 7.*

STEP 7

Feed the wires from the main fixture through the side hole of the adjoining additional fixture. (Figure 7A)

Screw the fixtures together using the provided nut and locknut.

STEP 8

Screw the mounting plate of the additional fixture to the wall. (Figure 6)

STEP 9

Make electrical connection using wire nuts or quick connects. (Figure 7A)

STEP 10

Snap the access hatch to the fixture casing. (Figure 7B)

*\*Repeat the process with remaining additional fixtures (if applicable).*

