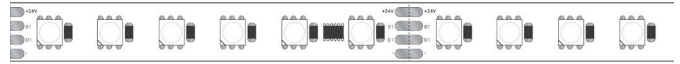


LSP65DX-RGBW

4.6W INDOOR DIGITAL PIXEL COLOR-CHANGING LED STRIP

Project _____
Location _____
Quote/ Ref # _____

LSP65DX-RGBW is an indoor, digital color changing flexible LED strip that provides a full spectrum of color options using red, green and blue LED technology. This addressable RGBW strip can be individually controlled every 4" to create moving effects, patterns, chases and more. The LSP65DX-RGBW is compatible with DMX control systems.



SPECIFICATIONS

| | |
|--------------------|--------------------------|
| INPUT VOLTAGE | 24V DC |
| POWER CONSUMPTION | 4.6W/FT |
| LEDS/ FT. | 18 LEDS/Ft. |
| LEDS PER PIXEL | 6 LEDs per pixel - 4 in. |
| LUMEN OUTPUT | 227 Lm/Ft. |
| DIMMING | Through DMX controller |
| MAXIMUM RUN LENGTH | 16 Ft. |
| CUTTABLE | Every 3.9" (100 mm) |
| BEAM ANGLE | 120° |
| IP RATING | Indoor |
| CERTIFICATIONS | UL Listed |
| LUMEN MAINTENANCE | 50,000 Hrs. |

LUMENS

| CCT | LM/ FT |
|----------------|--------|
| RGBW (Digital) | 227 |
| RGB | 142 |
| 3000K | 85 |



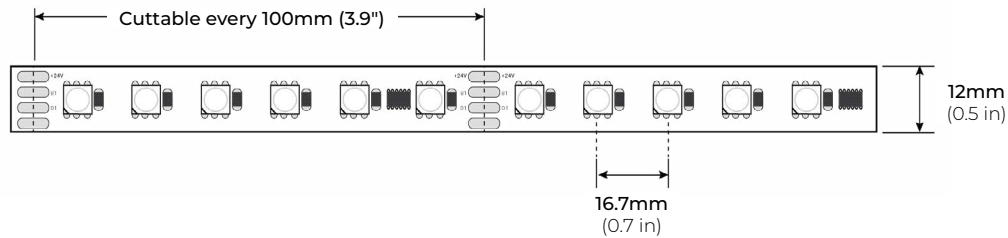
| MODEL | COLOR TEMP | LENGTH | VOLTAGE | PROFILE |
|---------|-----------------------------|-----------------------|---------------------|-------------------------------------|
| LSP65DX | RGBW30K RGB+3000K | 16 16 Ft. | 24 24V DC | See Page 2 for compatible profiles. |
| | RGBW40K RGB+4000K | 100 100 Ft. | | |
| | 'XX Per Ft. | | | |

*1 = Custom length per FT.

LSP65DX-RGBW

4.6W INDOOR DIGITAL PIXEL COLOR-CHANGING LED STRIP

DIMENSIONS

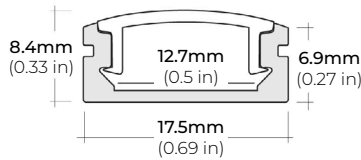


COMPATIBLE ALUMINUM PROFILES

SURFACE PROFILES

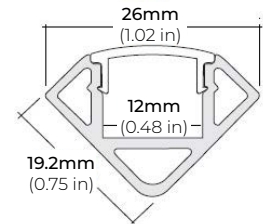
ALU-SF

LENGTHS 39.4" | 78.9" | 84" | 98"
LENS Clear, Frosted
FINISH Black | Silver



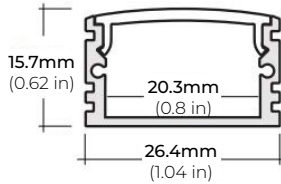
ALU-CN (CORNER)

LENGTHS 39.4" | 78.9" | 84" | 98"
LENS Clear, Frosted
FINISH Black | Silver



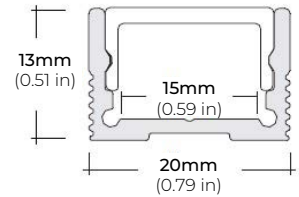
ALU-DS100

LENGTHS 39" | 78" | 84"
LENS Clear, Frosted
FINISH Silver



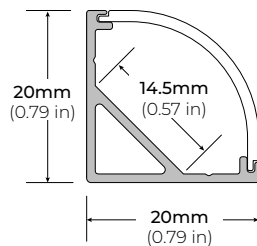
ALP-70

LENGTHS 49.25" | 84" | 98.5"
LENS Frosted
FINISH White | Black | Silver



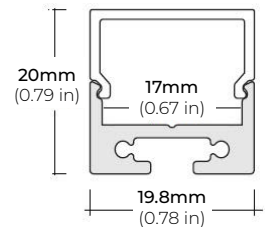
ALP-75C (CORNER)

LENGTHS 49" | 84" | 98"
LENS Frosted
FINISH Black | Silver



ALP-80

LENGTHS 49.25" | 98.5"
LENS Frosted
FINISH Silver

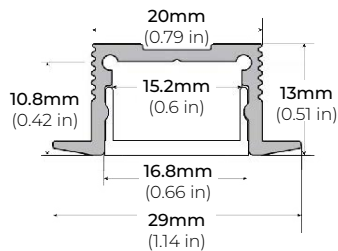


* For more compatible profiles, visit corelightingusa.com

RECESED PROFILES

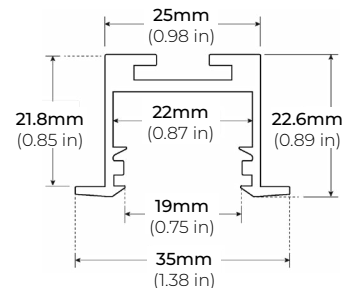
ALP-70R

LENGTHS 48" | 98"
LENS Frosted
FINISH Black | Silver



ALP-102R

LENGTHS 49" | 98"
LENS Frosted, Black, Asymmetric, Double Asymmetric
FINISH White | Black | Silver



* For more compatible profiles, visit corelightingusa.com

LSP65DX-RGBW

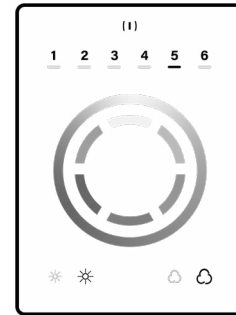
4.6W INDOOR DIGITAL PIXEL COLOR-CHANGING LED STRIP

DMX CONTROLLERS

RGB-SCW4

WiFi DMX WALL CONTROLLER

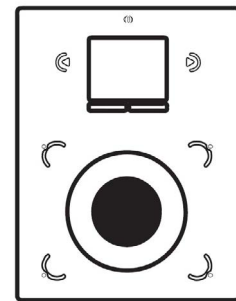
| | |
|-----------------|--|
| INPUT VOLTAGE | 5 - 10V DC, 06A |
| OUTPUT SIGNAL | DMX512 (x2) |
| PROGRAMMABILITY | PC/ MAC |
| COLOR OPTIONS | Black/ White |
| CONNECTIONS | USB/ 8dry contact ports/ Open drain output (for relay) |
| MEMORY | Built-In Flash |
| WORKING TEMP | -10°C ~ 45°C |
| DIMENSIONS | LxWxH (5.75"x4.17"x0.43") |



RGB-SDE3

WiFi DMX WALL CONTROLLER

| | |
|-----------------|--|
| INPUT VOLTAGE | 6V DC, 0.6A |
| OUTPUT SIGNAL | DMX512 (x2) |
| PROGRAMMABILITY | PC/ MAC/ Tablet/ Smartphone |
| COLOR OPTIONS | Black/ White |
| CONNECTIONS | USB/ Ethernet/ RS232/ CLock/ 8dry contact ports/ 5V output relay |
| MEMORY | MicroSD Card |
| WORKING TEMP | -20°C ~ 40°C |
| DIMENSIONS | LxWxH (5.75"x4.17"x0.43") |

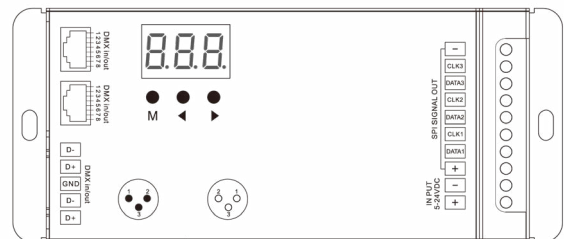


DMX DECODERS

DMX-SPI-XLR

DIGITAL DMX DECODER

| | |
|-----------------|------------------------|
| INPUT VOLTAGE | 5V-24V DC |
| INPUT SIGNAL | DMX512 + RF 2.4GHZ |
| OUTPUT SIGNAL | SPI (TTL) x 3 |
| OUTPUT CHANNELS | RGB 510 |
| DIMENSIONS | LxWxH (6.5"x2.8"x1.5") |



NON-DIMMING DRIVERS (COMPATABLE WITH ALL SYSTEMS)

PSHK SERIES

NON-DIMMING CONSTANT VOLTAGE WITH JUNCTION BOX

| | | |
|---------------|---------|------------------------|
| PSHK-30W-24V | CLASS 2 | 6.5" X 3.6" X 1.02" |
| PSHK-60W-24V | CLASS 2 | 7.4" X 3.62" X 1.02" |
| PSHK-96W-24V | CLASS 2 | 8.66" X 3.66" X 1.61" |
| PSHK-150W-24V | | 10.24" X 4.06" X 1.81" |
| PSHK-200W-24V | | 10.24" X 4.06" X 1.81" |
| PSHK-288W-24V | CLASS 2 | 11.85" X 4.25" X 1.82" |
| PSHK-300W-24V | | 10.24" X 4.25" X 1.81" |

