

LSM-55 RGBW

5W INDOOR COLOR-CHANGING + WHITE LED STRIP

Project _____
Location _____
Quote/ Ref # _____

LSM-55 RGBW series is a flexible color-changing LED strip that provides the perfect lighting solution for spaces that require dynamic full color and white LED illumination. The warm white LED's combined with the full color spectrum of the RGB light array produces more powerful color options that's sure to please even the most discerning lighting designer.



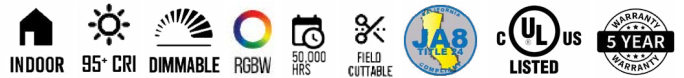
SPECIFICATIONS

INPUT VOLTAGE	24V DC
POWER CONSUMPTION	5W/Ft. <i>(4W/Ft. — RGB 1W/Ft. — White)</i>
LEDS/ FT.	128 LEDS per Ft.
LUMEN OUTPUT	238 Lm/ Ft. (30K)
CRI	95+
COLOR TEMPERATURE	RGB+27K / RGB+30K / RGB+40K
DIMMING	Through RGBW controller
MAXIMUM RUN LENGTH	16 Ft.
CUTTABLE	Every 2.46 in. (62.5mm) <i>(Field Cuttable)</i>
OPERATING TEMPERATURE	-40°F(-40°C)~140°F(60°C)
AMBIENT TEMPERATURE	-40°F(-40°C)~140°F(60°C)
BEAM ANGLE	120°
IP RATING	Indoor, dry location
CERTIFICATIONS	UL Listed, California TITLE 24 JA8
LUMEN MAINTENANCE	50,000 Hrs.

LUMENS

CCT	RGB (LM/FT)	WHITE (LM/FT)	RGBW (LM/FT)
2700K	133	104	237
3000K	133	105	238
4000K	133	111	244

*Approved for closet / storage space installation per NEC 410.16(A)(3) and 410.16(C)(5)

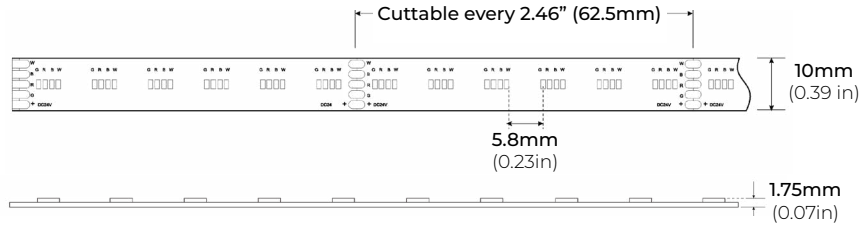


MODEL	COLOR TEMP	LENGTH	VOLTAGE	PROFILE
LSM55	RGBW27K RGB + 2700K	10 10Ft.	24 24V DC	See Page 3 for compatible profiles.
	RGBW30K RGB + 3000K	20 20Ft.		
	RGBW40K RGB + 4000K	XX Per Ft.		

LSM-55 RGBW

5W INDOOR COLOR-CHANGING + WHITE LED STRIP

DIMENSIONS

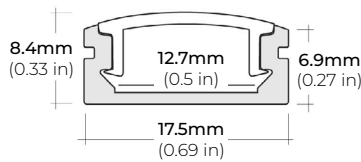


COMPATIBLE ALUMINUM PROFILES

SURFACE PROFILES

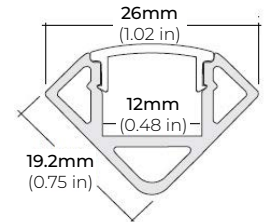
ALU-SF

LENGTHS 39.4" | 78.9" | 84" | 98"
LENS Clear, Frosted
FINISH Black | Silver



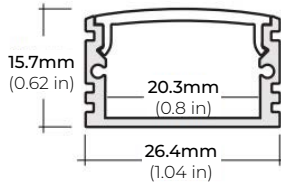
ALU-CN (CORNER)

LENGTHS 39" | 78" | 84" | 96"
LENS Clear, Frosted
FINISH Black | Silver



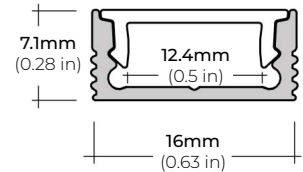
ALU-DS100

LENGTHS 39" | 78" | 84"
LENS Clear, Frosted
FINISH Silver



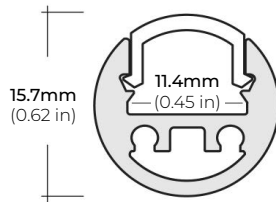
ALP-20

LENGTHS 49.25" | 84" | 98.5"
LENS Frosted
FINISH White | Black | Silver



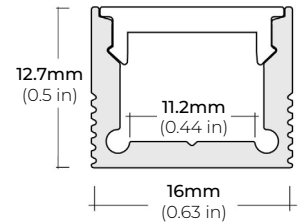
ALP-35

LENGTHS 48" | 96"
LENS Frosted
FINISH White | Black | Silver



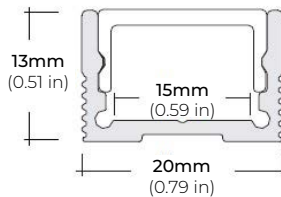
ALP-60

LENGTHS 49.25" | 84" | 98.5"
LENS Frosted
FINISH White | Black | Silver



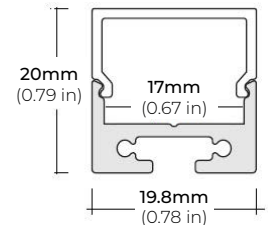
ALP-70

LENGTHS 49.25" | 84" | 98.5"
LENS Frosted
FINISH White | Black | Silver



ALP-80

LENGTHS 49.25" | 98.5"
LENS Frosted
FINISH Silver

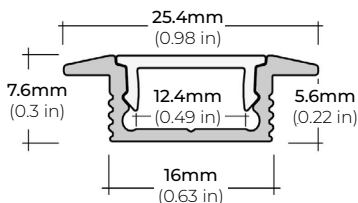


* For more compatible profiles, visit corelightingusa.com

RECESSED PROFILES

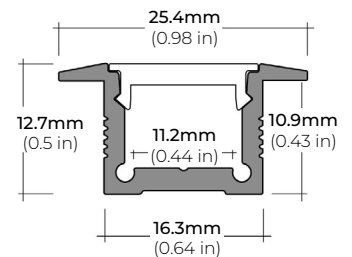
ALP-20R

LENGTHS 49.25" | 98.5"
LENS Frosted
FINISH White | Black | Silver



ALP-60R

LENGTHS 49.25" | 84" | 98.5"
LENS Frosted
FINISH White | Black | Silver



* For more compatible profiles, visit corelightingusa.com

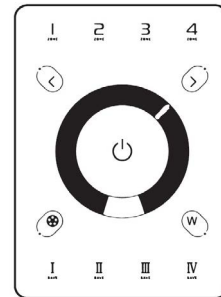
LSM-55 RGBW

5W INDOOR COLOR-CHANGING + WHITE LED STRIP

DMX CONTROLLERS

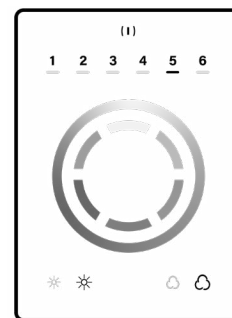
RGB CT600 MULTI-FUNCTION RGBW WALL CONTROLLER

INPUT VOLTAGE	5V DC, 1A
OUTPUT SIGNAL	RF 2.4GHZ + DMX512
CONTROL	4 ZONES
COLOR OPTIONS	Black/ White
WORKING TEMP	-20°C ~ 40°C
DIMENSIONS	LxWxH (5.19"x7.08"x1.38")



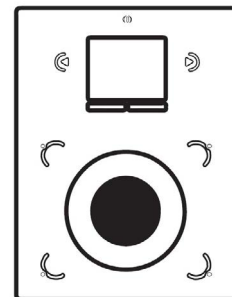
RGB-SCW4 WiFi DMX WALL CONTROLLER

INPUT VOLTAGE	5 - 10V DC, 06A
OUTPUT SIGNAL	DMX512 (x2)
PROGRAMMABILITY	PC/ MAC
COLOR OPTIONS	Black/ White
CONNECTIONS	USB/ 8dry contact ports/ Open drain output (for relay)
MEMORY	Built-In Flash
WORKING TEMP	-10°C ~ 45°C
DIMENSIONS	LxWxH (5.75"x4.17"x0.43")



RGB-SDE3 WiFi DMX WALL CONTROLLER

INPUT VOLTAGE	6V DC, 0,6A
OUTPUT SIGNAL	DMX512 (x2)
PROGRAMMABILITY	PC/ MAC/ Tablet/ Smartphone
COLOR OPTIONS	Black/ White
CONNECTION	USB/ Ethernet/ RS232/ CLock/ 8dry contact ports/ 5V output relay
MEMORY	MicroSD Card
WORKING TEMP	-20°C ~ 40°C
DIMENSIONS	LxWxH (5.75"x4.17"x0.43")



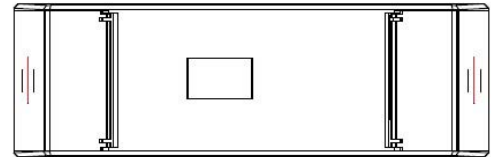
LSM-55 RGBW

5W INDOOR COLOR-CHANGING + WHITE LED STRIP

DMX DECODERS

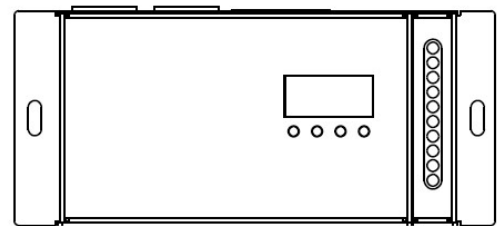
RGB-DMX-4C-RJ45 4-CHANNEL DMX DECODER

INPUT VOLTAGE	12V-24V DC
OUTPUT CURRENT	8A X 4CH
OUTPUT WATTAGE	4 x (96W ~ 288W)
OUTPUT CHANNELS	4
DIMENSIONS	LxWxH (6.5"x2.38"x1.27")



RGB-DMX-5C-XLR 5-CHANNEL DMX DECODER

INPUT VOLTAGE	12V-24V DC
OUTPUT CURRENT	8A X 5CH
OUTPUT WATTAGE	5 x (96W ~ 192W)
OUTPUT CHANNELS	5
DIMENSIONS	LxWxH (6.45"x2.87"x1.5")



LSM-55 RGBW

5W INDOOR COLOR-CHANGING + WHITE LED STRIP

NON-DMX CONTROLLERS

RGB-CT550

RGBW WIRELESS RECEIVER / CONTROLLER SYSTEM

REMOTE DISTANCE	100 Ft. (Line of Sight)
FREQUENCY	2.4 GHz
DIMENSIONS	LxWxH (6.38"x1.65"x0.59")
WEIGHT	0.44lbs.



* RGB-CT500-RX
(Sold Separately)

RGB-CT550-RX

RGBW WIRELESS RECEIVER / CONTROLLER SYSTEM

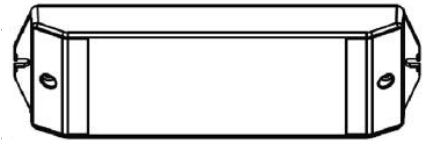
INPUT VOLTAGE	DC5V ~ DC24V
POWER CAPACITY	100W (5V) 240W (12V) 480W (24V)
OUTPUT CURRENT	5A per Channel (20A Total)
WORKING TEMP	-30°C~55°C (-22°F~131°F)
DIMENSIONS	LxWxH (6.89"x1.73"x1.18")

* RGB-CT500-RX (Sold Separately)

RGB-CT700

MASTER RGBW WIFI CONTROLLER

INPUT VOLTAGE	12-24V DC
OUTPUT TYPE	Constant Voltage
POWER CAPACITY	288W (12V) 384W (24V)
OUTPUT CURRENT	5A per Channel (20A Total)
WORKING TEMP	-4°F (-20°C) ~ 122°F (50°C)
DIMENSIONS	LxWxH (7 x1.8 x 0.8")

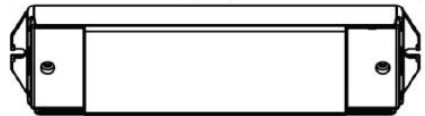


* Paired with RGB-CT705ZR (Sold Separately)

RGB-CT705ZR

SLAVE RGBW WIFI CONTROLLER

INPUT VOLTAGE	12-24V DC
OUTPUT TYPE	Constant Voltage
POWER CAPACITY	288W (12V) 384W (24V)
OUTPUT CURRENT	5A per Channel (20A Total)
WORKING TEMP	-4°F (-20°C) ~ 122°F (50°C)
DIMENSIONS	LxWxH (7 x0.63 x 0.71")



* Paired with RGB-CT700 (Sold Separately)

LSM-55 RGBW

5W INDOOR COLOR-CHANGING + WHITE LED STRIP

NON-DMX CONTROLLERS (CONTINUED)

RGB-CT840
BLUETOOTH TOUCH PANEL WALL CONTROLLER

INPUT VOLTAGE 12-24V DC
ZONES 4
CONTROL MODE RGB | RGBW
WIRELESS PROTOCOL Bluetooth 5.0 SIG Mesh
WORKING TEMP -20°C ~ 55°C
DIMENSIONS LxWxH (4.7"x3"x1.2")

** Paired with RGB-CT800-RC (Sold Separately)*



RGB-CT800-RC
BLUETOOTH CONSTANT VOLTAGE LED RECEIVER

INPUT VOLTAGE 12V | 24V
OUTPUT CURRENT 4Ax5CH / 5Ax4CH (20A Max)
POWER CAPACITY 240W (12V) | 480W (24V)
PROGRAMMABILITY iOS and Android
WORKING TEMP -20°C ~ 55°C
DIMENSIONS LxWxH (6.9 x1.7 x 1.2")

** Paired with RGB-CT840 (Sold Separately)*



NON-DIMMING DRIVERS (COMPATIBLE WITH ALL SYSTEMS)

PSHK SERIES
NON-DIMMING CONSTANT VOLTAGE WITH JUNCTION BOX

PSHK-30W-24V	CLASS 2	6.5" X 3.6" X 1.02"
PSHK-60W-24V	CLASS 2	7.4" X 3.62" X 1.02"
PSHK-96W-24V	CLASS 2	8.66" X 3.66" X 1.61"
PSHK-150W-24V		10.24" X 4.06" X 1.81"
PSHK-200W-24V		10.24" X 4.06" X 1.81"
PSHK-288W-24V	CLASS 2	11.85" X 4.25" X 1.82"
PSHK-300W-24V		10.24" X 4.25" X 1.81"

