

LWW120-XPO

LINEAR LED WALL WASHER

Project _____

Location _____

Quote/ Ref # _____

LWW120-XPO is a powerful outdoor rated line voltage luminaire excellent for signs, landscape accent, or grazing illumination. With the low profile linear housing, the LWW120-XPO allows the flood to be easily hidden or blend into the a variety of applications.



SPECIFICATIONS

INPUT VOLTAGE	100-277V AC
POWER CONSUMPTION	33W (12 In.) 52W (24 In.) 84W (36 In.)
LUMEN OUTPUT	Up to 97 Lm./ W
COLOR TEMPERATURE	27K/ 30K/ 35K/ 40K/ 50K/ 65K
MAXIMUM RUN LENGTH	Linkable up to 40 Ft.
OPERATING TEMPERATURE	-4°F(-20°C) ~ 122°F (50°)
BEAM ANGLE	6°/ 30°/ 6° x 55°
CRI	80+
DIMMING	0-10V
HOUSING	Extruded Aluminum
IP RATING	IP66 Outdoor/ Wet Location
POWER FACTOR	> 0.9
CERTIFICATIONS	ETL Listed
LUMEN MAINTENANCE	50,000 Hrs.
WARRANTY	5 Years

FEATURES

- 80+ CRI
- 270° Tilttable Stand
- Multiple beam angles
- Multiple CCT options available
- ETL Listed

LUMENS

MODEL	WATT	OPTIC	LM/ FT	LM/W
LWW120-XPO-12	33W	6°	2905	90
		30°	2641	82
		6° X 55°	2480	77
LWW120-XPO-24	52W	6°	4351	82
		30°	3789	72
		6° X 55°	5169	97

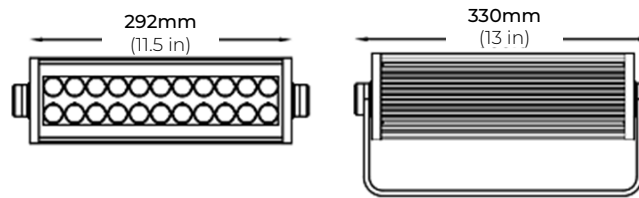
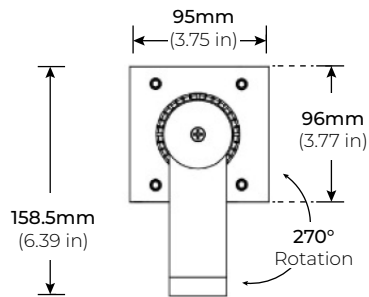


MODEL	LENGTH	COLOR TEMP	OPTICS	FINISH	DIMMING	VOLTAGE	OPTIONS
LWW120-XPO	12 13 in (33W)	27K 2700K	6 6°	GR Gray	010 0-10V	UNV 120V-277V	IJB Inground Junction Box
	24 23.6 in (52W)	30K 3000K	30 30°	BK Black			
	36 37.2 in (84W)	35K 3500K	655 6° x 55°				
		40K 4000K					
		50K 5000K					
		65K 6000K					

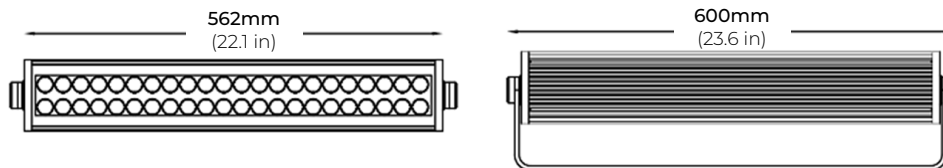
LWW120-XPO

LINEAR LED WALL WASHER

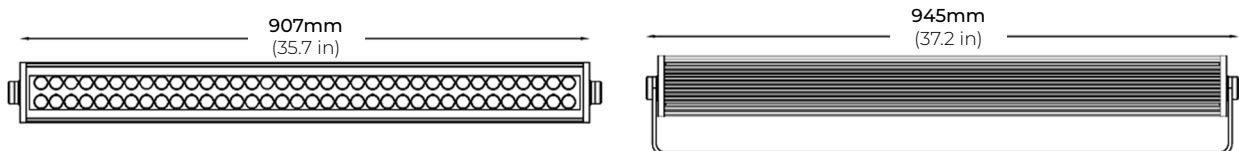
DIMENSIONS



LWW120-XPO-12



LWW120-XPO-24

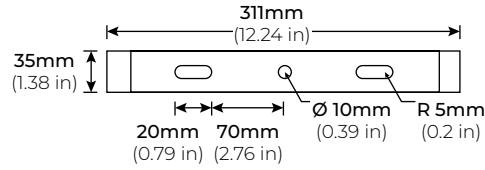


LWW120-XPO-36

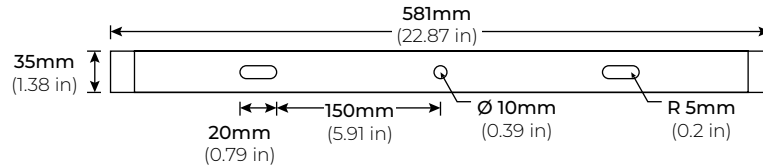
LWW120-XPO

LINEAR LED WALL WASHER

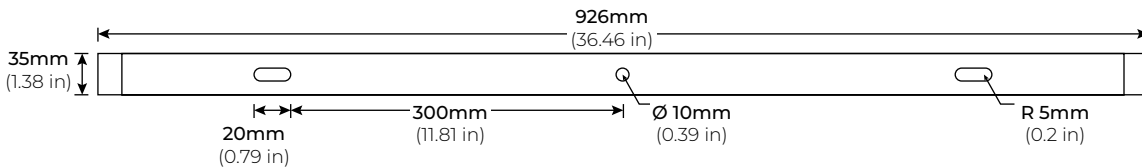
MOUNTING PATTERNS



LWW120-XPO-12



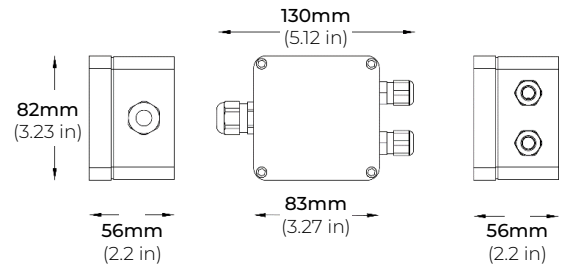
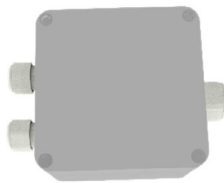
LWW120-XPO-24



LWW120-XPO-36

ACCESSORIES

LWW120-XPO-IJB
INGROUND JUNCTION BOX



LWW120-LNK-10
LWW120-LNK-36
LWW120-LNK-72
10", 36", 72" LINK EXTENSION CABLE
*Sold Separately



LWW120-HWC-72
LWW120-HWC-120
72" AND 120" HARDWIRE CABLE
*Sold Separately

